



Measuring Guide

This guide will give you step-by-step instructions on how to measure and create a floor plan (aerial view) of your space. This information will provide our designers with everything they need to begin a design and price estimate of your kitchen project.

You will need...

- A Tape Measure
- A Pencil & This Guide



Name: _____

Phone: _____

Address: _____

Email: _____

City: _____

Budget: _____

State: _____

Door Style: _____

Zip Code: _____

Finish: _____

Once complete, scan and send to
contact@kitchennbathcenter.com

or come to
Our Showroom

617.934.8330

M-F 9:00am to 6:00pm | 2 Central St - Suite 111 - Framingham MA 01701



Step 1:

Measure Your Space

TIP

Be sure to measure the full length of each wall.

Starting in the left corner, measure each wall in the space that will contain cabinets and record those measurements (in inches) on the "Floor Plan Design Grid" located on the last page of this Measuring Guide.

Number each wall on the floor plan.

Step 2:

Doors, Windows & Openings

TIP

When measuring doors, windows and room openings include the trim/casing in the dimensions.

Locate and measure doors, windows and room openings.

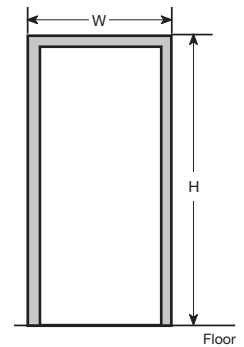
Record and Number each door, window and room opening on the grid.

Record the corresponding dimensions in the measurement charts below.

Door/Opening Measurements

Label on the floor plan using the corresponding numbers below

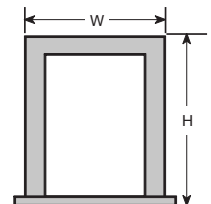
Door/ Opening	WIDTH	HEIGHT	NOTES
1			
2			
3			
4			



Window Measurements

Label on the floor plan using the corresponding numbers below

Window	WIDTH	HEIGHT	NOTES
1			
2			
3			
4			





Step 3: Obstacles

TIP

If you are unsure of an obstacle, mark it down for our designers.

Locate and measure obstacles such as electrical outlets, vents, pipes, radiators, ect.

Record any islands you already have or wish to add.

Record and Number each obstacle on the grid.

Step 4: Appliances

TIP

Send us manufacturer specification sheets.

Common appliances typically come in standard sizes but it is important that we have the measurements. Luxury appliances such as cooktops, range hoods, warming drawers, and wine chillers have dimensions that can vary drastically.

Appliance Measurements

Label on the floor plan using the corresponding numbers below

	WIDTH	DEPTH	HEIGHT
RANGE Brand/Model			
MICROWAVE Brand/Model			
REFRIGERATOR Brand/Model			
DISHWASHER Brand/Model			
COOK-TOP Brand/Model			
OVEN Brand/Model			
HOOD Brand/Model			
OTHER Brand/Model			



Step 5: Ceiling Height

TIP
Measure height in 3 areas and
record the shortest dimension.

Accurate ceiling height measurements are very important when determining which wall cabinets and crown moulding you want in your new kitchen. It is very important to take several measurements as the height can vary in different spots in the room. Many older homes have soffits above their wall cabinets that need to be taken into consideration when creating your design.

Ceiling Measurements

A = Ceiling Height

Ceiling Height: _____

Soffits

(the area between the top of the wall cabinet and the ceiling).

Does the room have soffits?

If yes, please mark the diagram to the right.

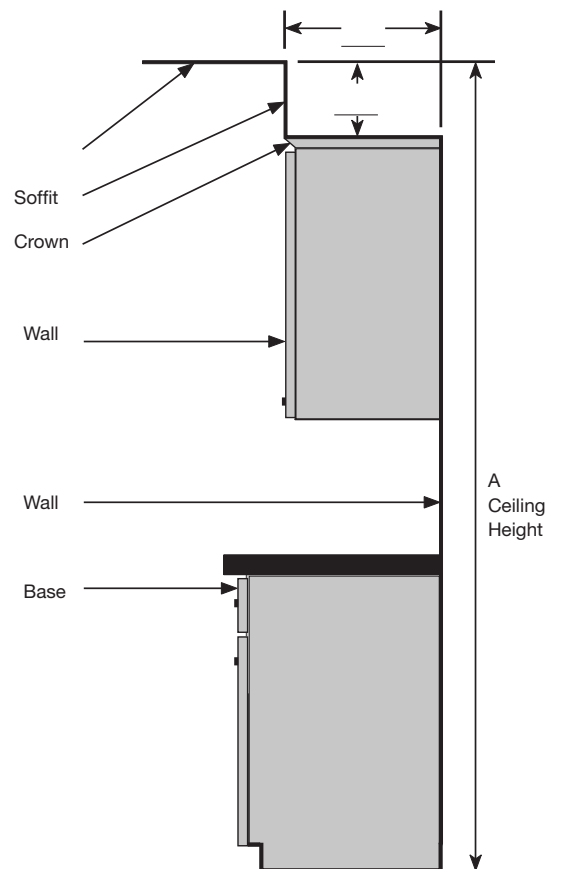
Yes No

Do you plan to keep the existing soffits?

Yes No

Please check any additional items you are interested in adding:

- | | | |
|---|--|---|
| <input type="checkbox"/> Base Molding | <input type="checkbox"/> Glass Doors | <input type="checkbox"/> Plate Rack |
| <input type="checkbox"/> Crown Molding | <input type="checkbox"/> Lazy Susan | <input type="checkbox"/> Roll Out Trays |
| <input type="checkbox"/> Crown Molding On Ceiling | <input type="checkbox"/> Light Rail Molding | <input type="checkbox"/> Spice Pull Out Cabinet |
| <input type="checkbox"/> Cutlery Divider | <input type="checkbox"/> Microwave Base Cabinet | <input type="checkbox"/> Soft Close Doors |
| <input type="checkbox"/> Decorative Door Panels | <input type="checkbox"/> Microwave Upper Cabinet | <input type="checkbox"/> Wide Storage Drawers |
| <input type="checkbox"/> Garbage Pull Out Cabinet | <input type="checkbox"/> Open Shelves | <input type="checkbox"/> Wine Storage |





Step 6:

Photos

TIP






The more photos the better!

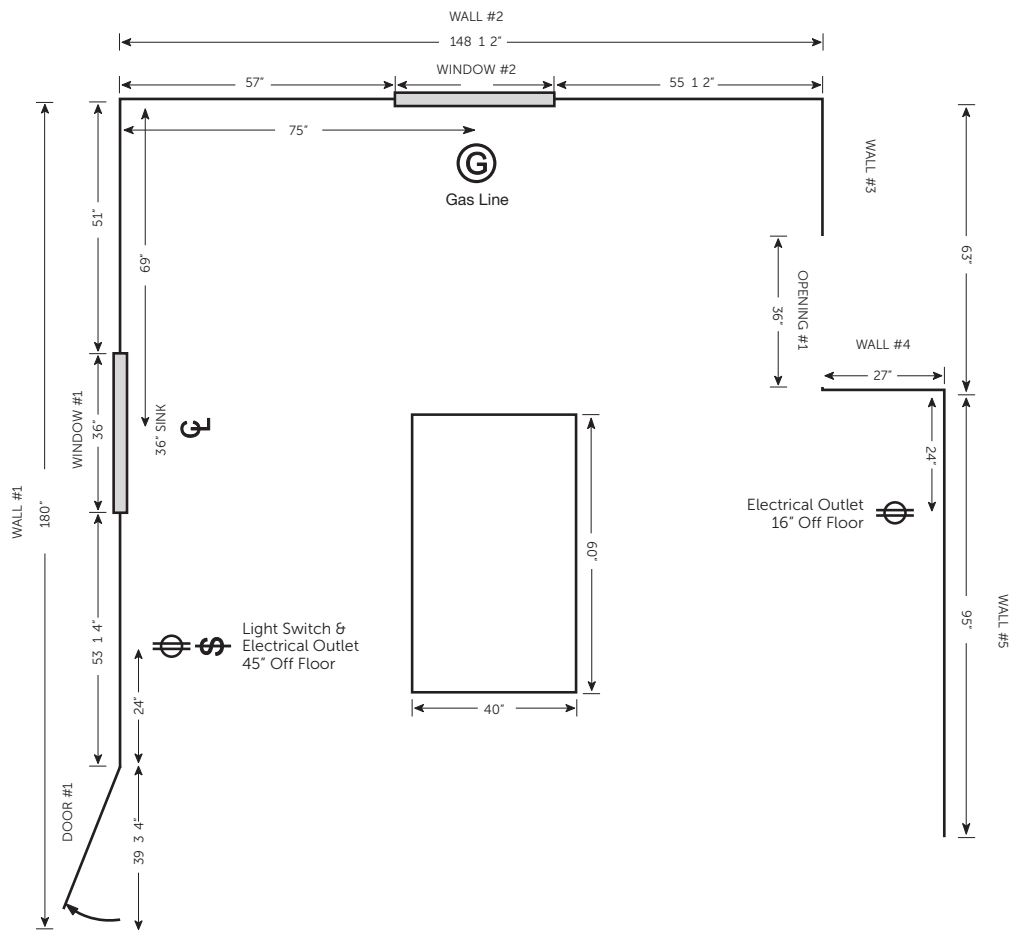
Now that you have completed the measuring guide, it is time to take some photos of your current space. Make sure to include pictures of each wall that will contain cabinets.

Example for your reference while creating the floor plan of your space.

Utility/Mechanical Legend:

Use these symbols on your floor plan.

-  Center Line
-  Light Switch
-  220V (Electric Stove)
-  Outlet
-  Gas





**KITCHEN & BATH
CENTER**

Measuring Guide

617.934.8330 | contact@kitchennbathcenter.com

M-F 8:00am to 5:00pm | 2 Central St - Suite 111 Framingham, MA 017014

